



Ingrams

Sturminster Newton

PCM

£1,800 PCM

A bright and spacious Townhouse offering five double bedrooms, situated in Sturminster Newton where town and country meet. The property has been very well maintained and provides comfortable, modern living throughout, making it an ideal choice for families or professional tenants.

The accommodation includes a generous main bedroom with a en-suite, alongside four further well-proportioned double bedrooms. A modern, well-appointed kitchen forms the heart of the home, complemented by light and airy reception space designed for practical day-to-day living.

Externally, the property benefits from two allocated parking spaces and a private courtyard garden, offering a low-maintenance yet enjoyable outdoor area. Additional features include uPVC double glazing and quality finishes throughout.

This well-designed home offers generous room sizes, a practical layout, and a highly desirable location close to countryside and riverside walks, schools for all ages, and convenient access to the town centre. An excellent opportunity for tenants seeking a high-quality property in a sought-after area.

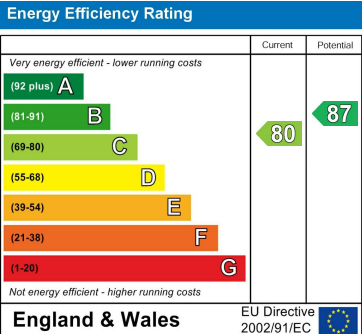
Available - Now
EPC Rating Band 'C'
Council Tax Band 'E'
Deposit Required £2075.00 (1 week before the move in date along with the rent)
Subject to Referencing, £415.00 holding deposit will be required.

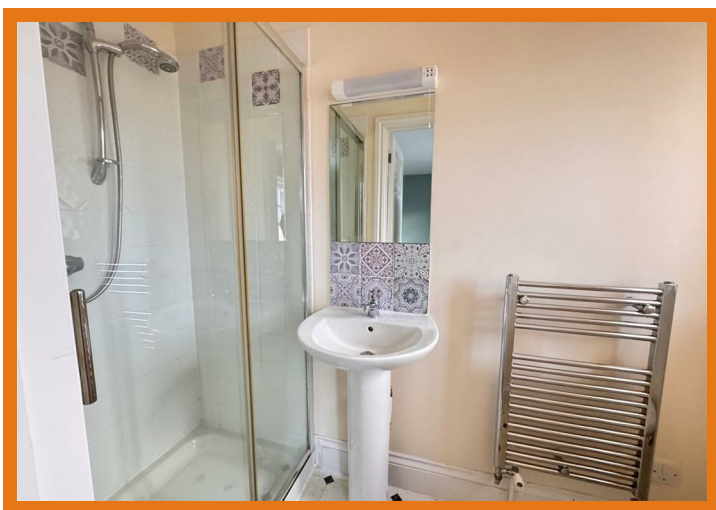
Children allowed, pets considered. No smokers/vapers.

www.mortonnew.co.uk
lettings@mortonnew.co.uk
Landlord has the right to refuse

1 Market House
Market Place
Sturminster Newton
Dorset
DT10 1AS

t. 01258 473030
sales@mortonnew.co.uk
www.mortonnew.co.uk





DISCLAIMER: These particulars, whilst believed to be accurate are set out as a general outline only for guidance and do not constitute any part of an offer or contract. Intending purchasers should not rely on them as statements or representation of fact, but must satisfy themselves by inspection or otherwise as to their accuracy. We have not carried out a detailed survey nor tested the services, appliances and specific fittings. Room sizes should not be relied upon for carpets and furnishings. The measurements given are approximate. No person in this firms employment has the authority to make or give any representation or warranty in respect of the property.